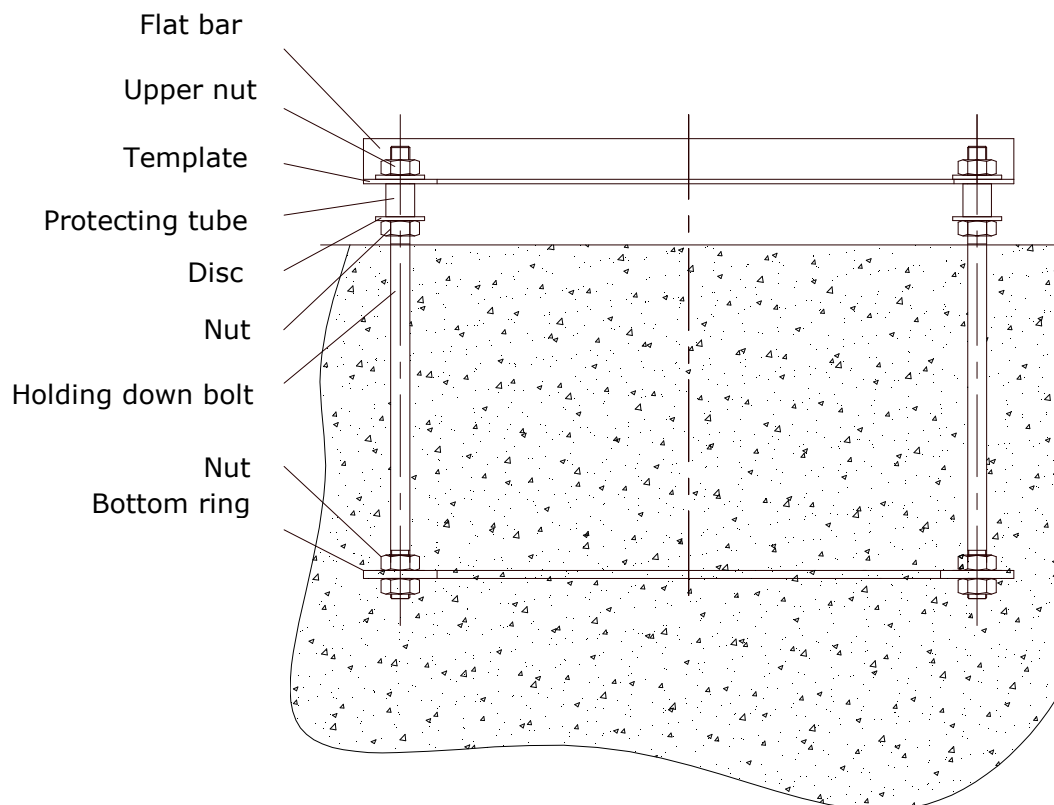


CONCRETING OF ANCHORAGE

The anchorage is performed as shown below:



One of the bolts is marked with a red colour. This marking is very important for the placing of the anchorage in the concrete.

The red mark is typically placed below the flue gas inlet, but the placing always has to be checked according to the drawing of the chimney.

The anchorage is concreted to approx. 1cm under the lower edge of the adjustment nut as shown on the sketch.

It has to be ensured that the bolts remain vertical during concreting.

Before erecting the chimney the protecting tube and the template are to be removed.

Rev. 01-08-2012