

MEASURING POINTS

The VL-standard measuring points can be delivered in 2 different types:

The first type for continuous measurements is made with an opening between the reinforcement collar and the measuring point. The opening is covered with silicone rubber fastened between 2 flanges.

The second type for reference measurements is designed with a reinforcement collar covered with a blind flange. To make measurements the blind flange is removed and hereby you can get to the measuring point.

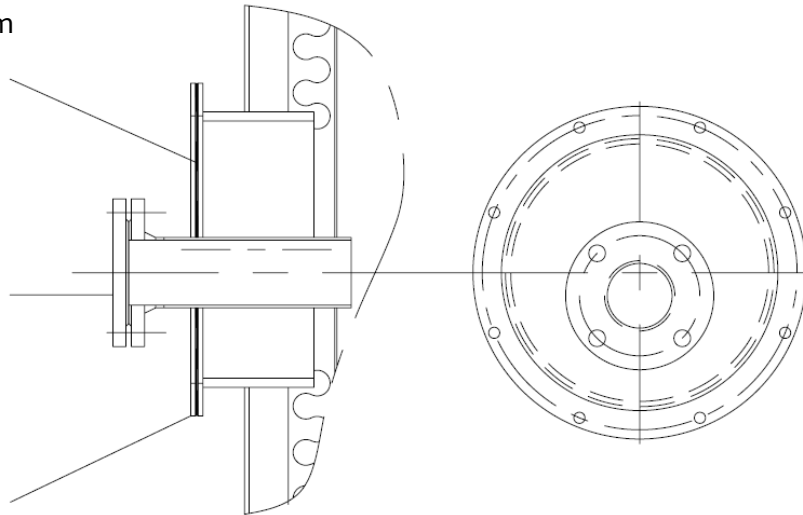
Measuring point for continuous measurements



Covering of 3 mm
silicone rubber

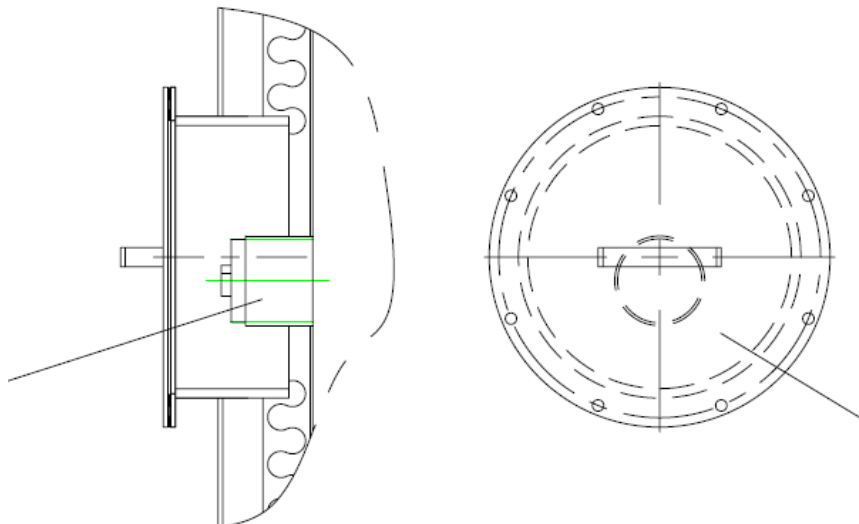
Flange and blind
flange

Flange



Measuring point for reference measurements

Socket
with plug



Blind plate

Rev. 01-08-2012